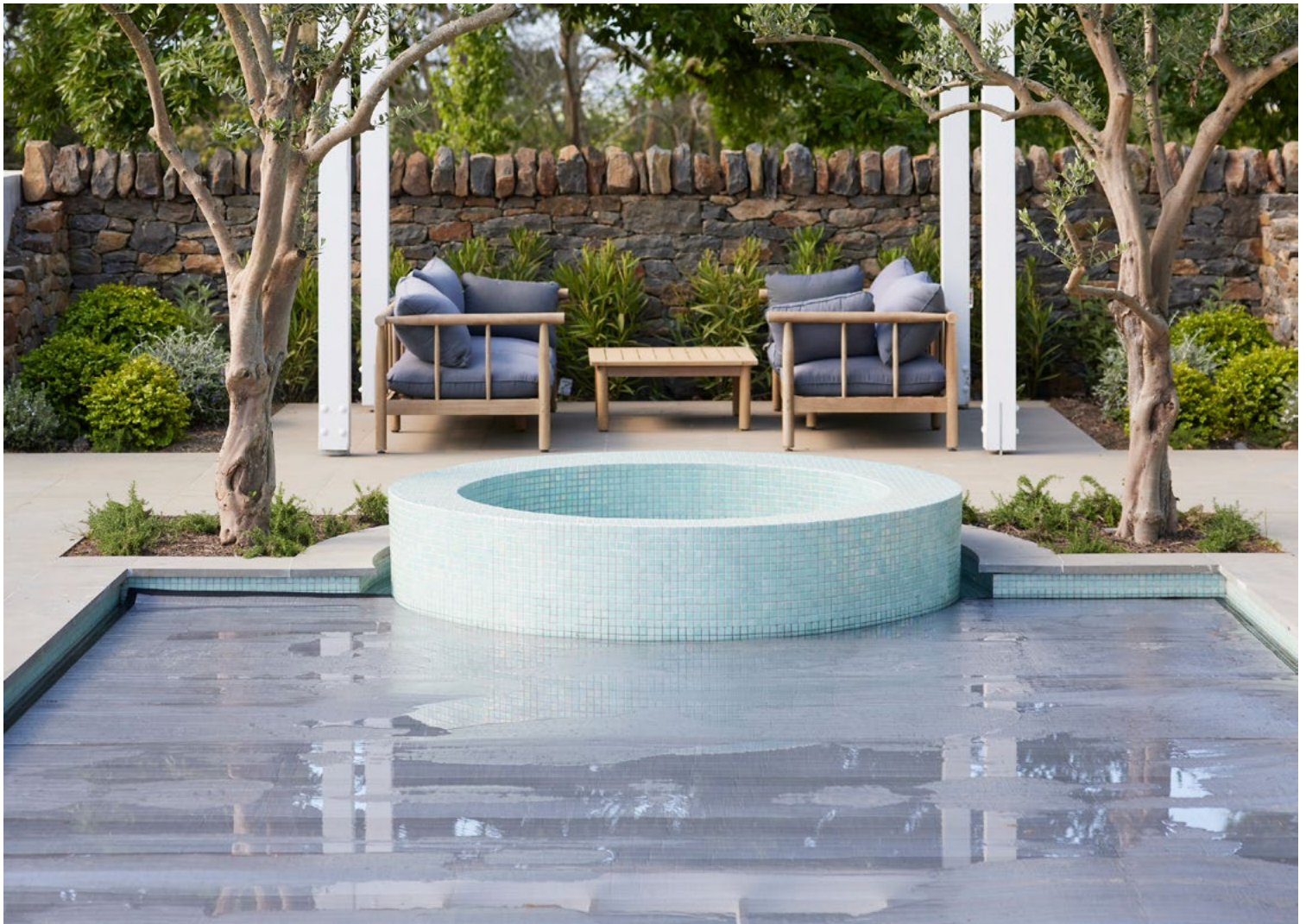


THERMAL COVER

INSTALLATION GUIDE



COVERROLL SUPPORT



Thermal Cover - Install Guide

CUTTING THE COVER TO SIZE

Tools Required



SHARP PAIR OF SCISSORS



TAPE MEASURE
Optional



WEIGHTS (I.E BRICKS)



LONG BLADE STANLEY KNIFE



PENCIL/TEXTA
Optional



SUITABLE PPE

PPE should be worn while assembling/installing product

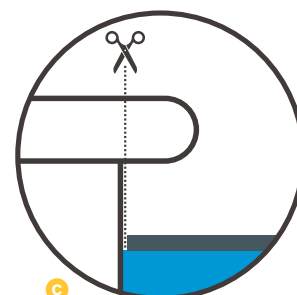
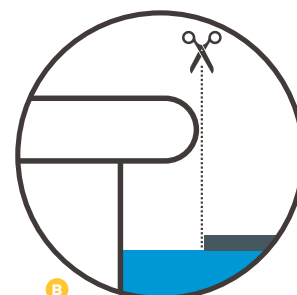
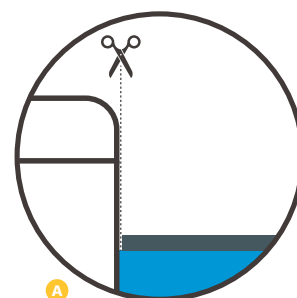
Cutting the cover to size

1. Lay the cover flat over the pool, and hold in position with some weights (i.e bricks)
2. Using the pool edge or coping as a guide, cut the cover to the shape of the pool. Always cut the cover 5% overlength to allow for possible shrinkage over the first 2-3 weeks of use.
3. Make a final trim to length after this period. You can then make a more accurate second cut if shrinkage has occurred.

Cutting the cover width: If your pool **has no coping overhang**, cut the cover from wall edge to wall edge **A**.

If your pool **has a coping overhang**, cut the cover width from coping to coping **B**.

Cutting the cover length: Regardless of whether your pool has a coping overhang, cut the cover to fit under the coping from wall edge to wall edge **C**.



Thermal Cover - Install Guide

ATTACHING THE COVER TO THE ROLLER WITH ATTACHMENT STRAPS

Tools Required



ELECTRIC DRILL
4mm drill bit - 114 roller
4.5mm drill bit - 150 & 200 roller



PENCIL/TEXTA



SCREWDRIVERS
No.3 Phillips head



HAMMER



PROTECTIVE BACKING
Timber or Plastic



TAPE MEASURE



SUITABLE PPE
PPE should be worn while
assembling/installing product

Supplied Parts



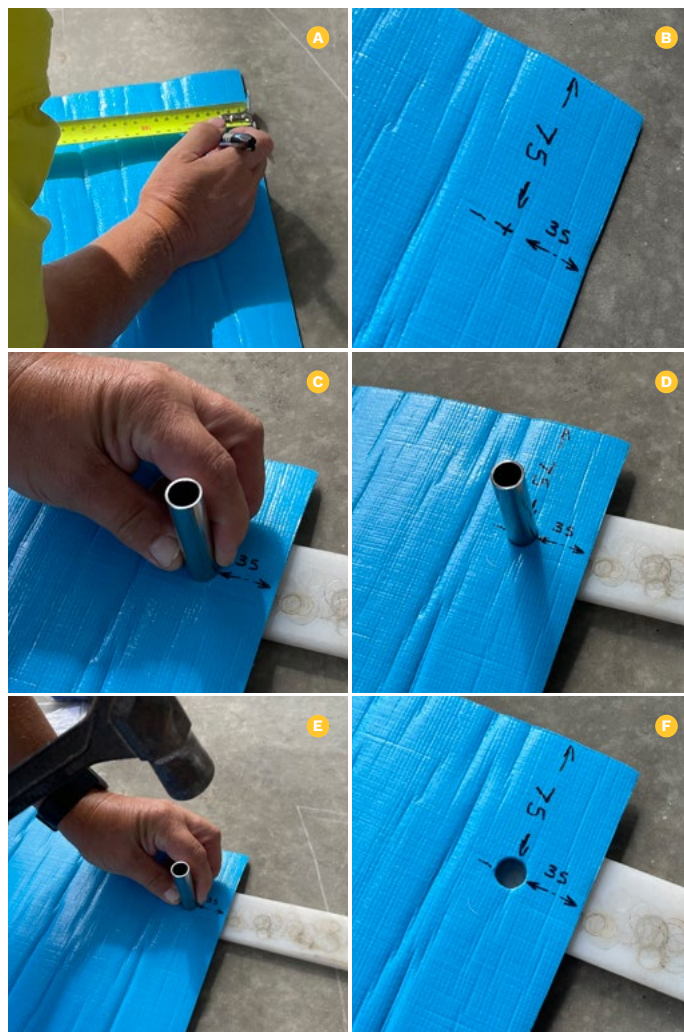
THERMAL COVER

If a roller has also been ordered, a 1.5m attachment kit will be supplied with the roller. Alternatively an attachment kit can be purchased separately to the thermal cover.
Part code #200008

If your cover has protective edging with pre-punched eyelets and attached straps, please proceed directly to step 10.

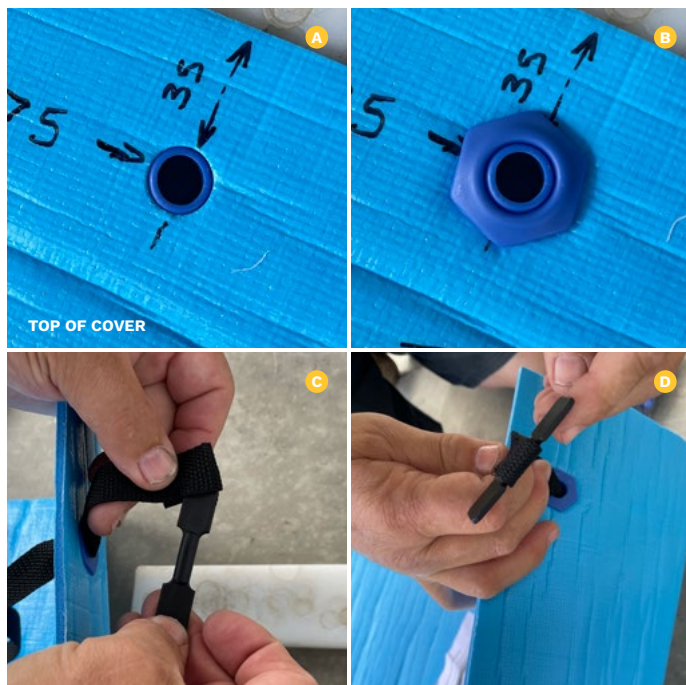
Punching the hole for the eyelet

4. Using a pencil or texta, draw a straight line across the width of your cover at least 50mm from the end of the cover **A**.
5. Now mark out where you intend to punch each hole for the attachment straps. They should be evenly spaced no more than 550mm apart and 75mm in from each edge and 35mm down from the top of the cover **B**.
6. Place a piece of protective backing (such as timber or plastic) underneath the cover to prevent damage to paving or decking. **C**.
7. Then take the metal punch supplied and using a hammer, tap the bevelled end of the punch into the marks you previously made on the cover **D E F**.



Thermal Cover - Install Guide

ATTACHING THE COVER TO THE ROLLER WITH ATTACHMENT STRAPS



Installing the eyelet, strap & paddle

8. Remove the black paddle from the loop at the end of the attachment strap. Slide off the blue eyelets. Repeat for all straps.
9. Place the male half/flange side of the blue plastic hexagon eyelet underneath the cover **A**.
10. Place the female/snapping section on top of the blanket and tap together lightly with a hammer **B**. Repeat for all holes.
11. Insert the attachment strap loop through the blue plastic eyelet from which you previously removed the paddle **C**.
12. Replace the black paddle through the loop to secure. Repeat for all straps **D**.

Preparing roller holes for attachment

13. Using a pencil or texta, draw a straight line along the roller following the shadow line **E F**.
14. Offer the cover up to the roller and transpose eyelet place onto the roller so you know where you will be drilling **G**.
15. Using a drill, make holes in the roller to match the locations of the blanket attachments. Use a 4mm drill bit for a 114mm roller, or a 4.5mm drill bit for 150mm and 200mm roller **H**.



Thermal Cover - Install Guide

ATTACHING THE COVER TO THE ROLLER WITH ATTACHMENT STRAPS

Attaching the strap to the roller

16. Place the screw through the aluminum washer/e-washer and over the attachment strap, approximately 1cm from the end of the attachment strap **I**.
17. Screw into the holes on the roller, ensuring the webbing is trapped between the washer and the roller. Be careful not to overtighten, as this could break the rubber insert. **J K**.

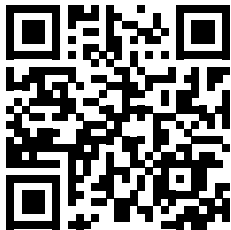


Haul Cord

You may have also purchased a haul cord. This is to be attached in the centre of the cover at the opposite end to the roller, at least 100mm away from the edge, using the blue eyelets as described above.



A Fluidra Brand



COVEROLL SUPPORT



SUNBATHER
1800 228 437



FLUIDRA
1300 MY FLUIDRA