

Coveroll Pro Ground

UPGRADE KIT INSTALLATION GUIDE

Tools Required



ELECTRIC DRILL
10mm drill bit



PENCIL/TEXTA



8 & 17MM SPANNERS



TAPE MEASURE



SUITABLE PPE
PPE should be worn while
assembling/installing product



5MM ALLEN KEY

Supplied Parts



2 X DROP PINS



4 X NYLOC NUTS



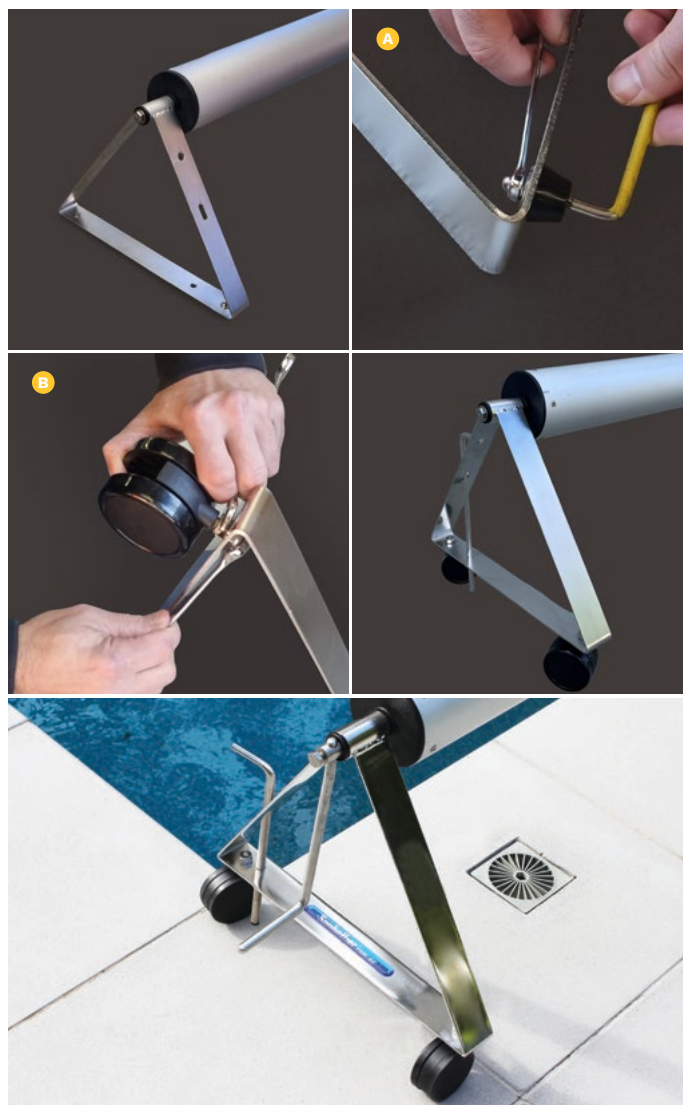
4 X CASTOR WHEELS



14MM SPANNER

Replacing rubber feet with castor wheels

1. Place allen key into bolt head on the under side of the rubber foot, then using an 8mm spanner, undo the dome nut. Then remove dome nut, washer, bolt and rubber foot. Repeat for all 4 rubber feet. **A**
2. Insert castor wheel bolt (already attached to castor wheel) into the hole where rubber foot was removed. Finger tighten nyloc nut onto the bolt with blue side of nut facing away from the castor wheel.
3. Hold the castor wheel in place by using the supplied 14mm spanner on the nut between frame and castor wheel. Tighten nyloc nut using a 17mm spanner. **B**



COVERROLL SUPPORT
GUIDES & BROCHURES



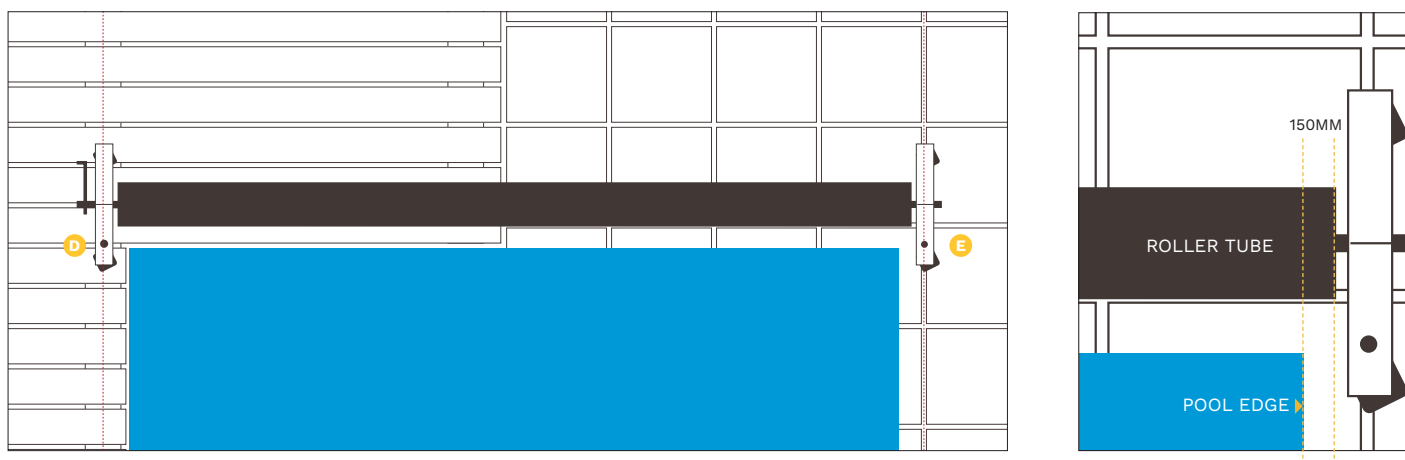
sbtradesupport.au@fluidra.com | sunbather.com.au



1800 228 437

Coveroll Ground – upgrade kit

HOW TO DRILL PIN POSITION



TIP: Ideally the roller tube should be positioned as close to the edge of the coping as possible. This positioning helps the cover lift up and directly onto the roller. Setting the roller too far back creates unnecessary drag and can cause the frames to tip forward.

REFER TO THE RELEVANT GUIDES FOR COVER & ATTACHMENT INSTALLATIONS

Drilling for pin positions

4. Position the roller so that the end frames are equally spaced from the sides of the pool and align the roller parallel to the end of the pool, so it is just off the water. Ensure the drop pin is on the side of the end frame closest to the water.
5. If the roller is on a tiled surface, align the drop pins with grout lines if possible (E). If the roller is on decking, position the roller so that the drop pins align over joists (D). This will prevent the drop pin from falling through the decking board.
6. Mark out the drop pin positions, ideally 200mm from the pool edge, and drill 10mm diameter holes approximately 25mm deep (E). Make sure that you use the appropriate drill type for your substrate.
7. Insert drop pins into drilled holes to secure the roller in place.

COVEROLL SUPPORT
GUIDES & BROCHURES



sbtradesupport.au@fluidra.com | sunbather.com.au



1800 228 437